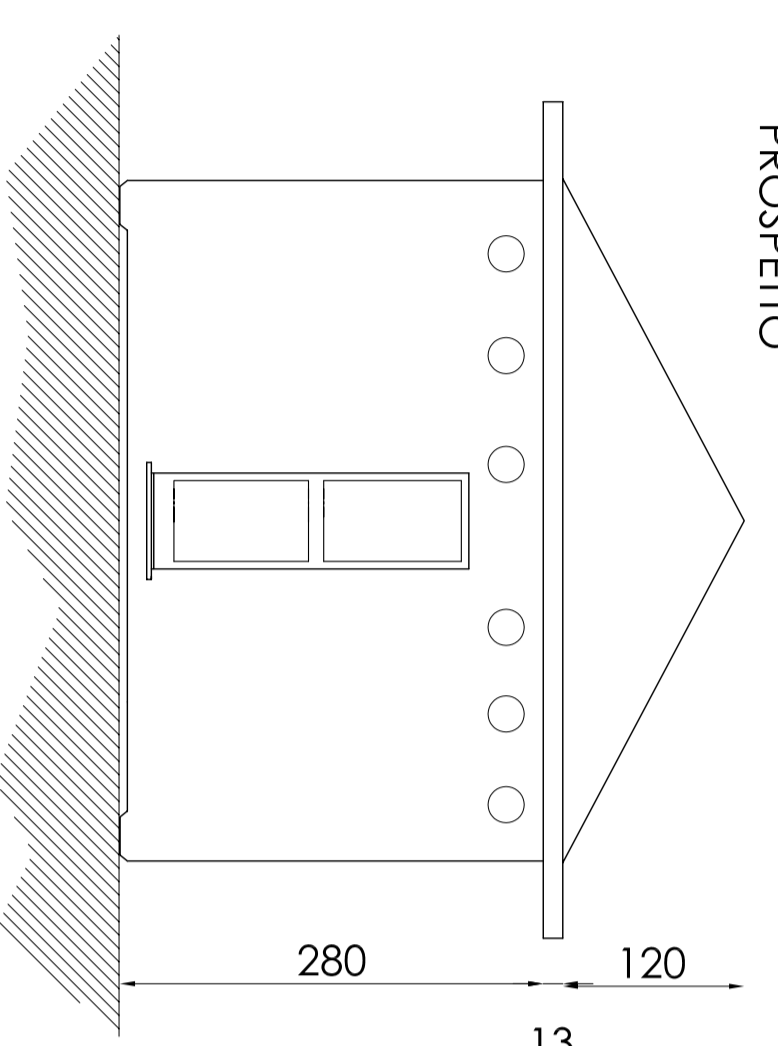
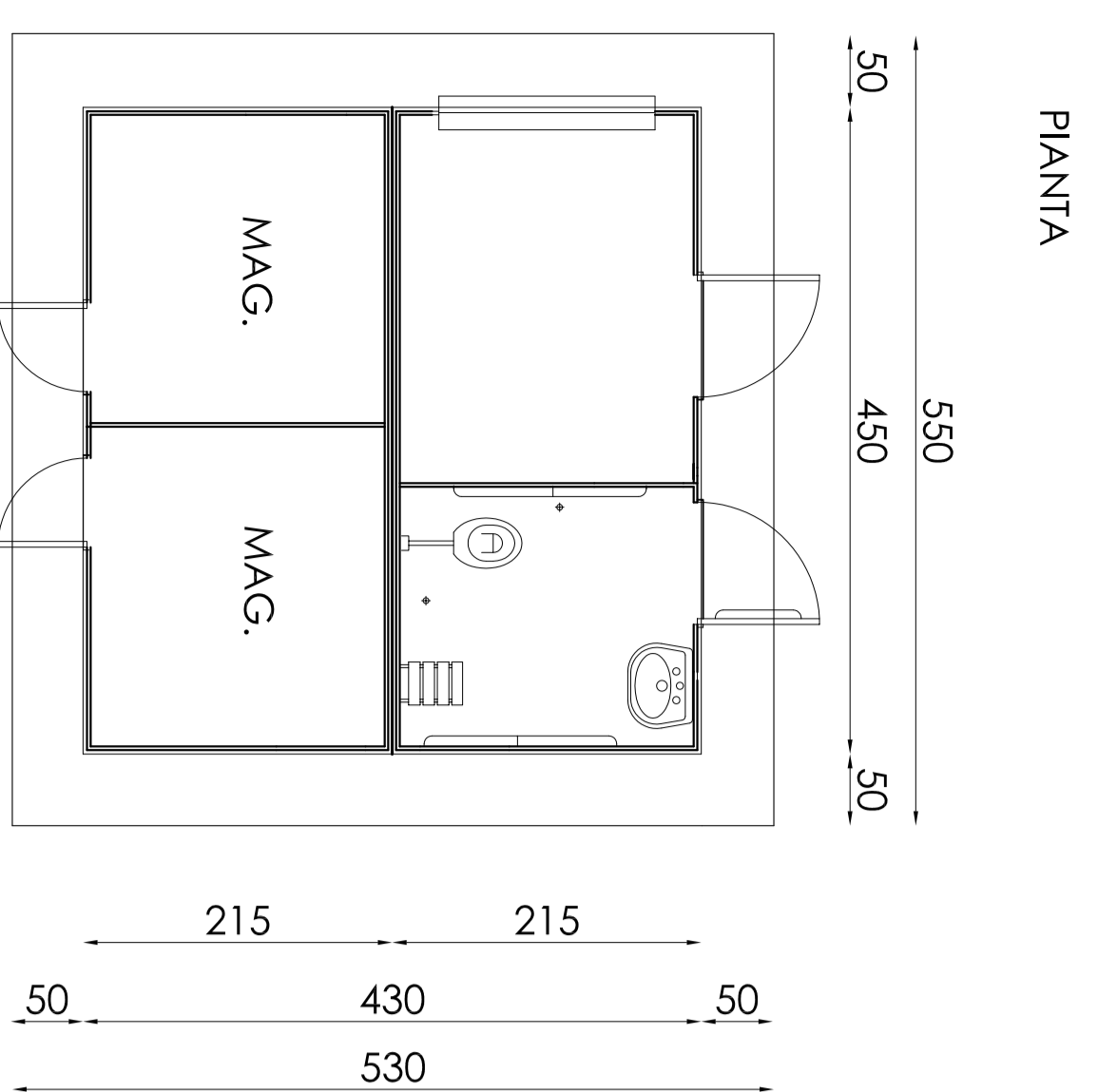
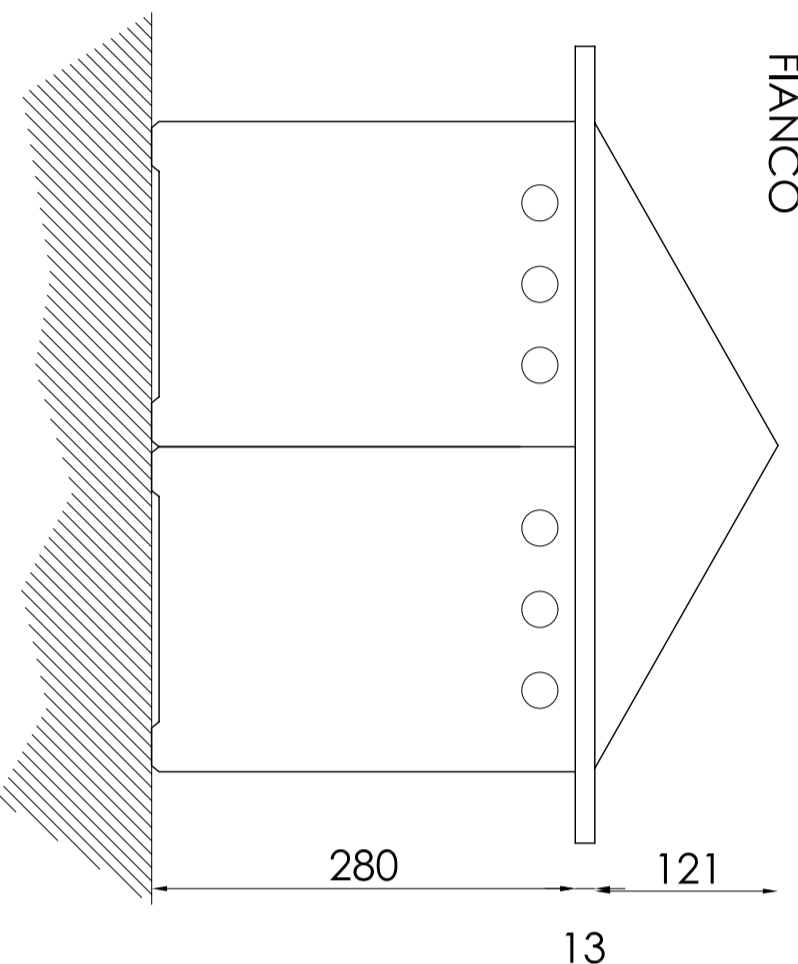


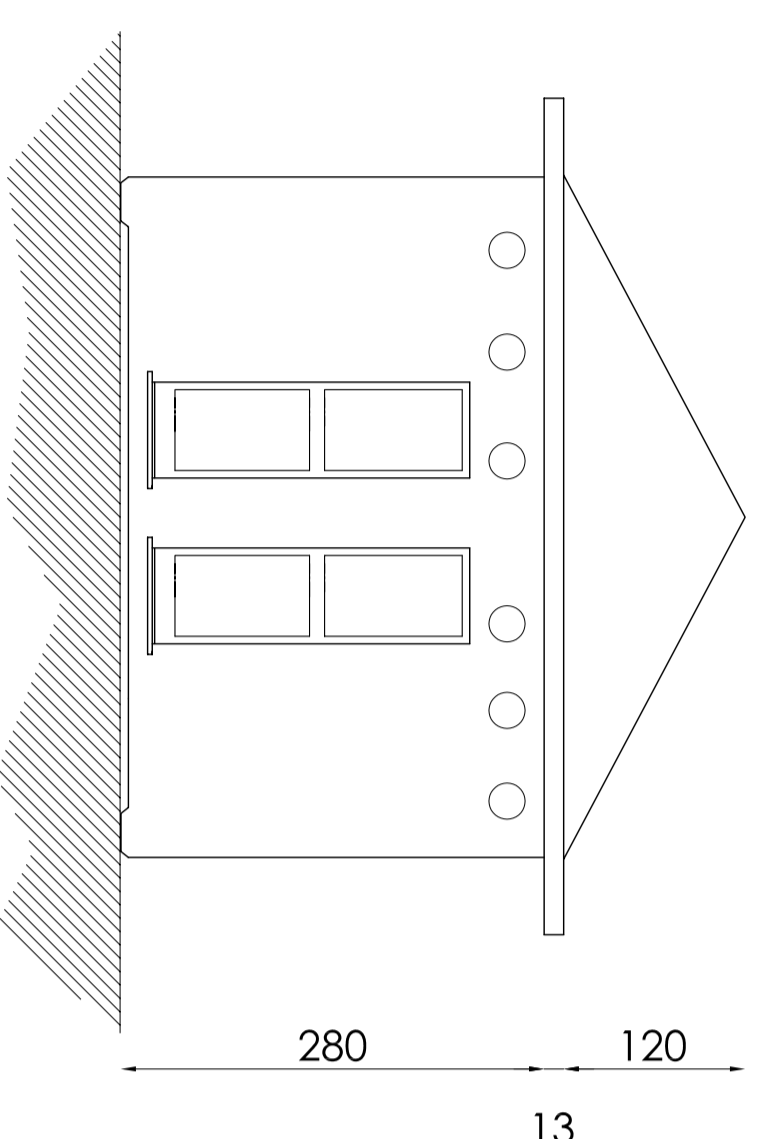
Tipologia A



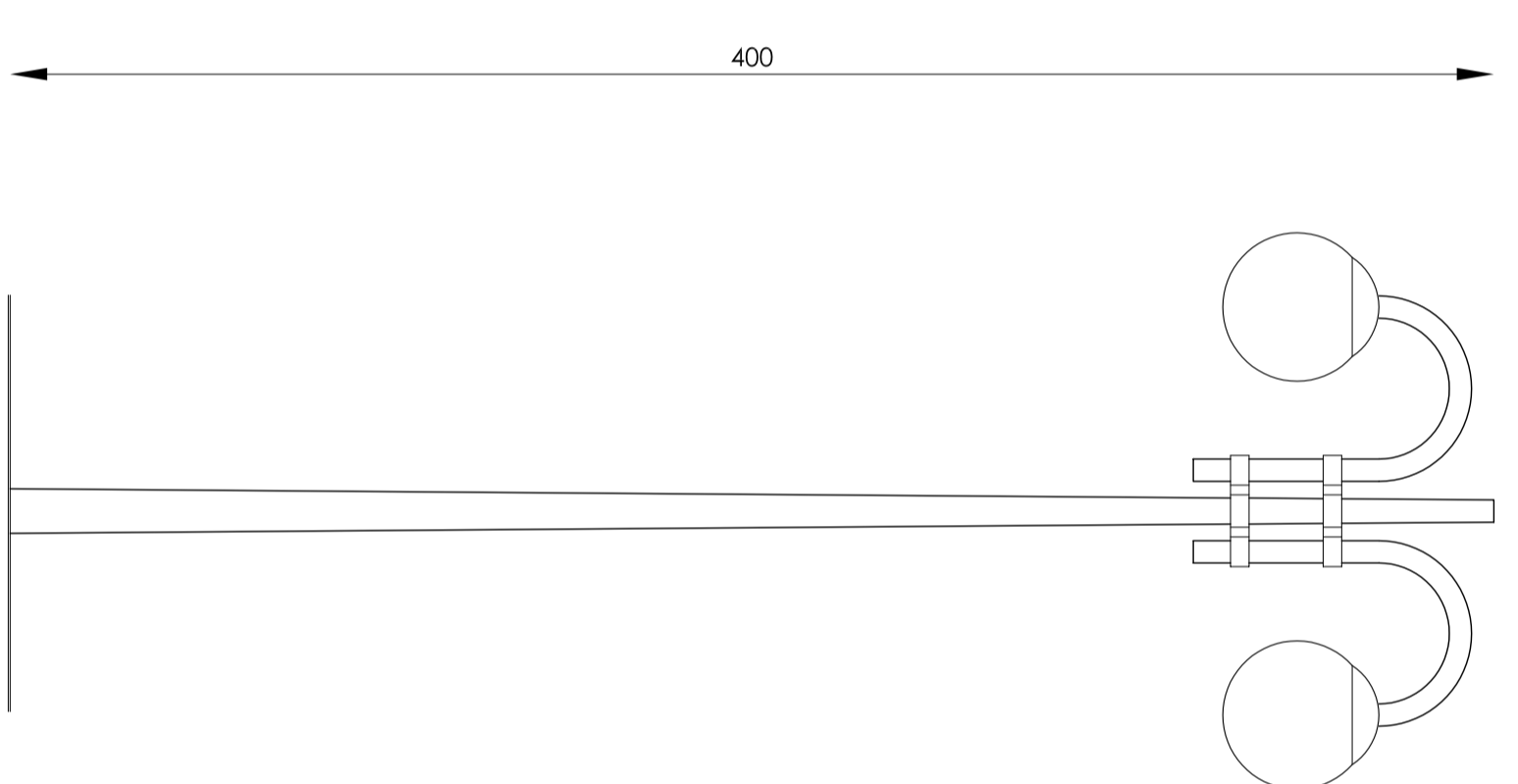
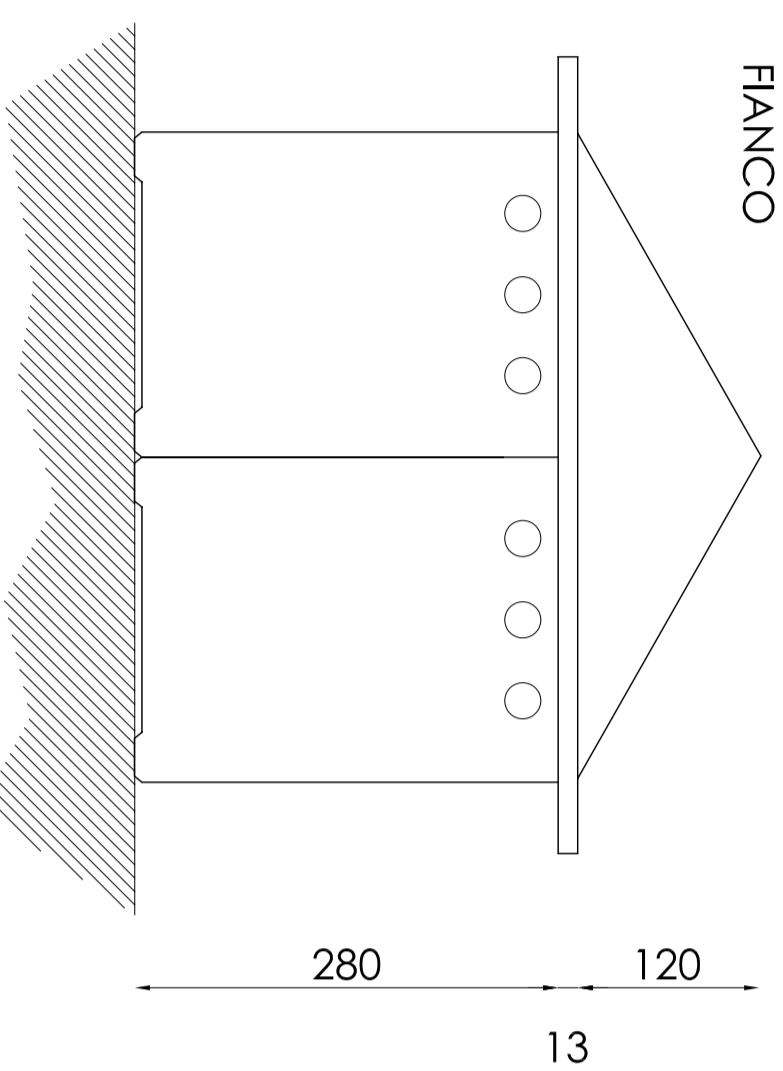
FIANCO



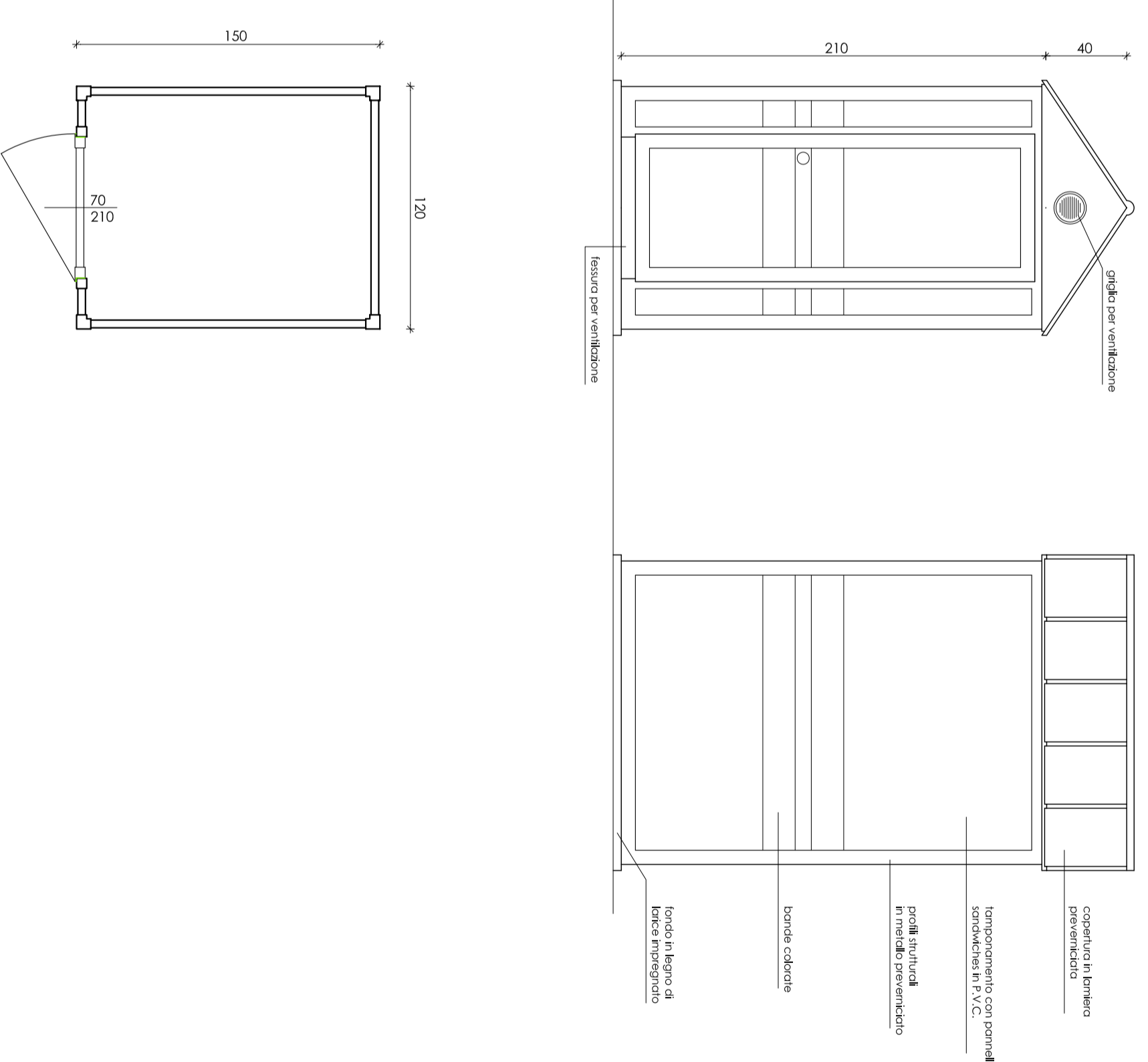
Tipologia B



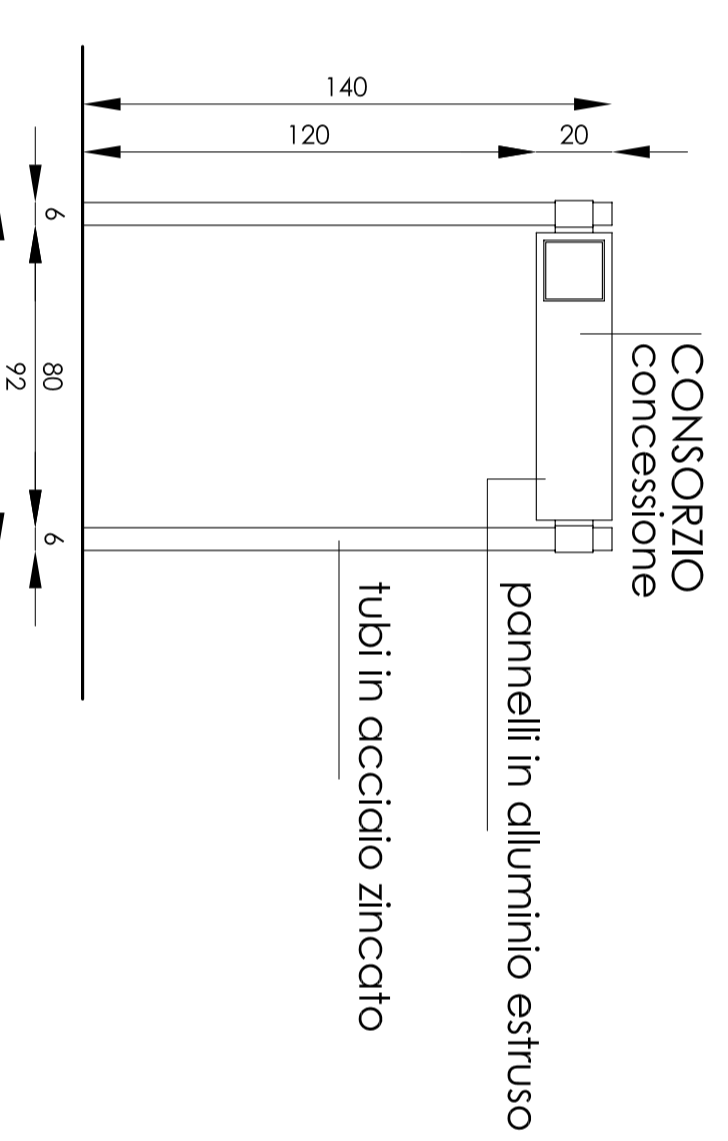
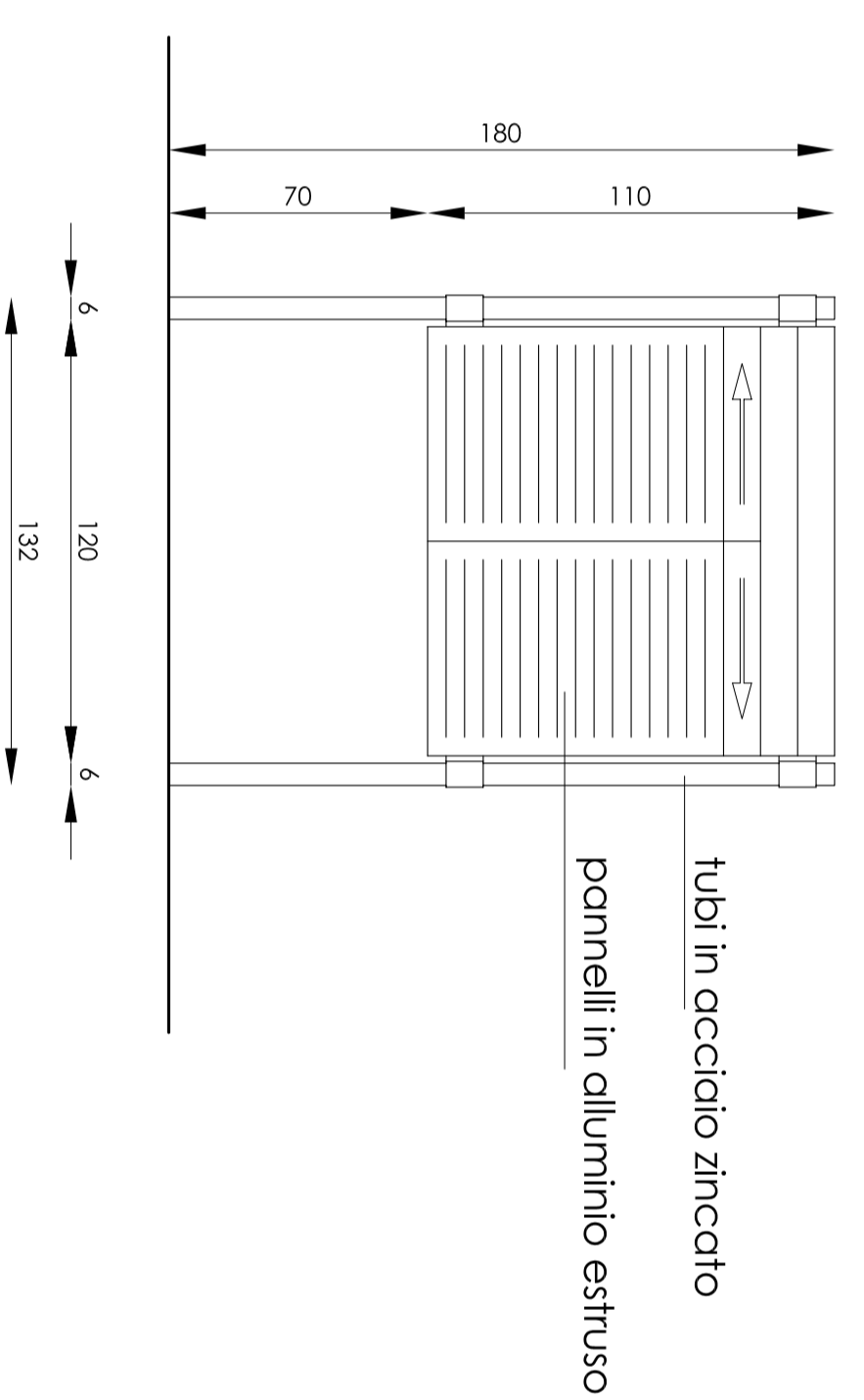
FIANCO



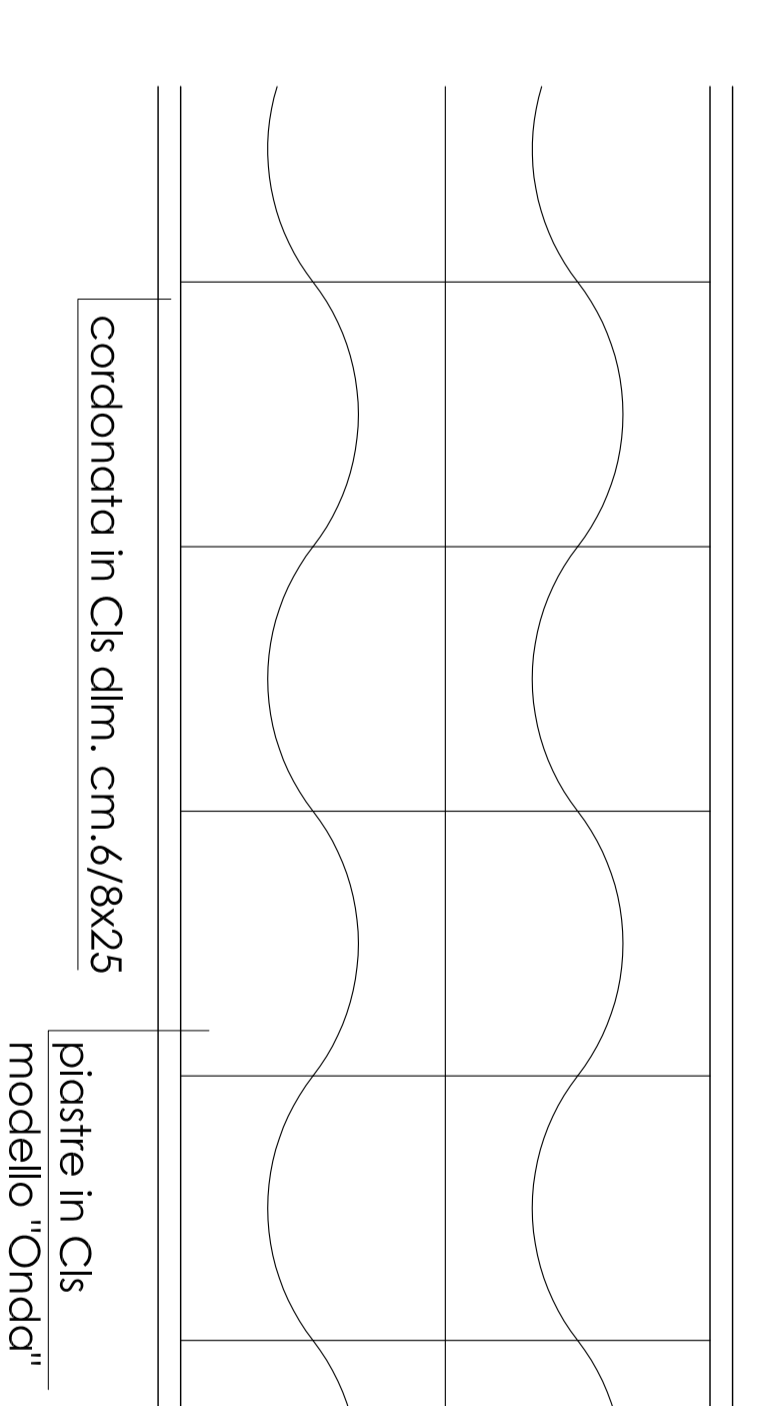
CABINA SPOGLIATOIO scala 1:25
Pianta, Prospetto frontale e Laterale



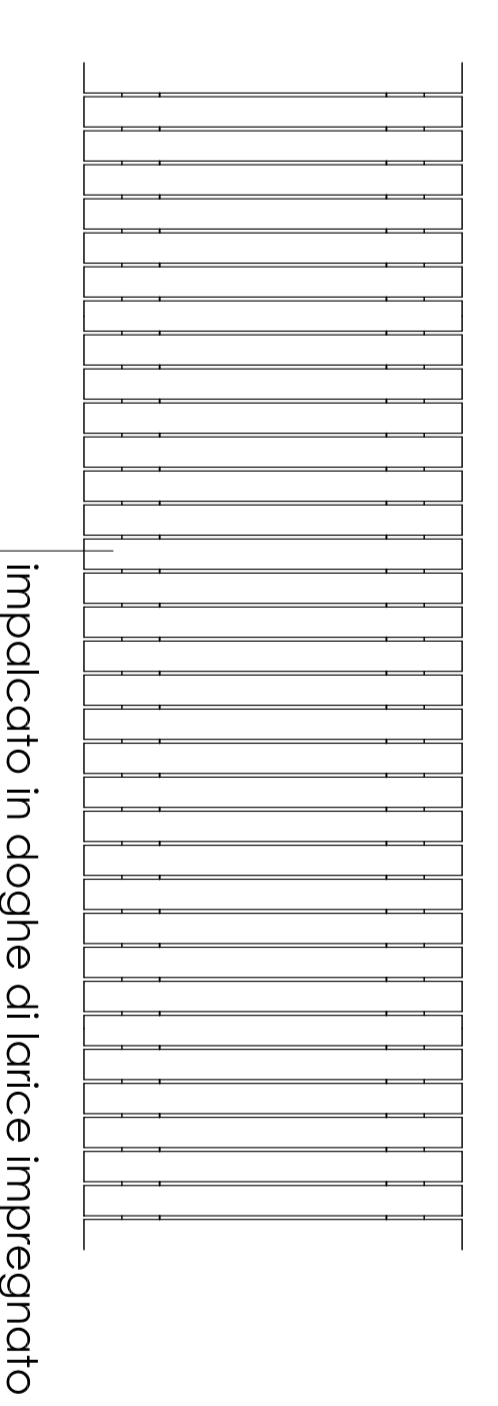
PANNELLI INFORMATIVI scala 1:20



PERCORSI PEDONALI (a monte) scala 1:20



PERCORSI PEDONALI (di penetrazione) scala 1:20



Comune di Jesolo

Piano Particolareggiato dell'Arenile

TAV. N. **7** 2

46

Elementi di arredo

IL SINDACO
Francesco Calvoro

IL SEGRETARIO GENERALE
dott.ssa Daniela Giaccari

IL PROGETTISTA
dott. Stefano Zornello

ADOTTATO CON DELIBERAZIONE DI GIUNTA COMUNALE

APPROVATO CON DELIBERAZIONE DI CONSIGLIO COMUNALE

stefano zornello
architetto

via S.M. Margherita, 2 - 35014 JESOLO (PD)
tel. 049/920001 - fax 049/920002
www.comune.jesolo.pd.it

redazione 02 - 1187-24818