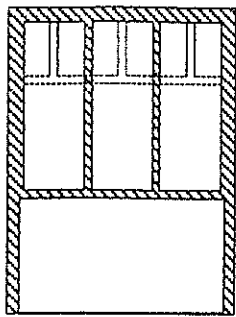


T

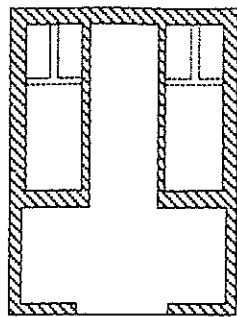
A

Regolamento Architettonico Cimitero di Jesolo

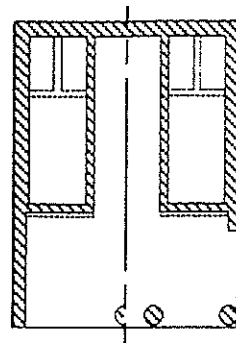
A<sub>1</sub>



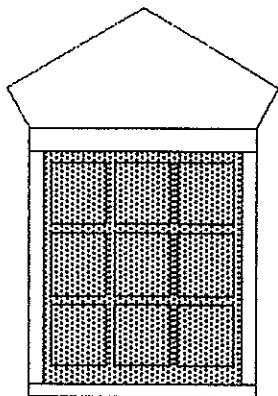
A<sub>2</sub>



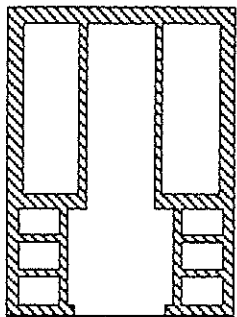
A<sub>3</sub>



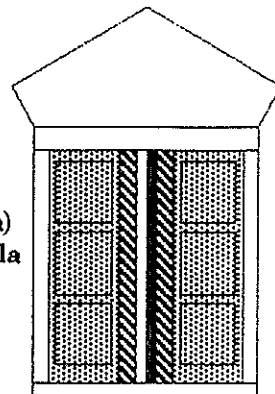
Soluzione con loggia semplice



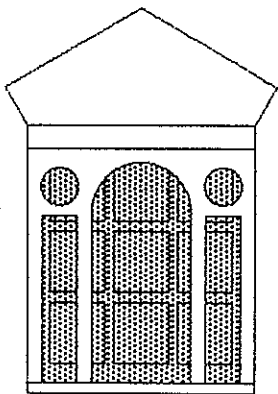
A<sub>4</sub>



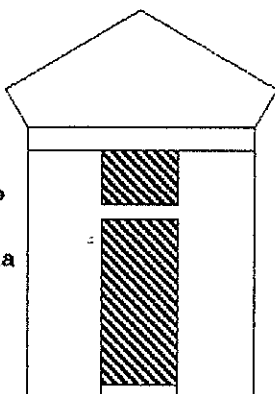
Soluzione 'in antis' (1 colonna) con navatella centrale



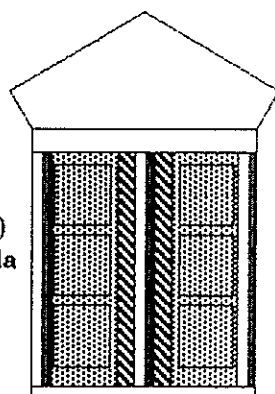
Soluzione con loggia a 'serliana'



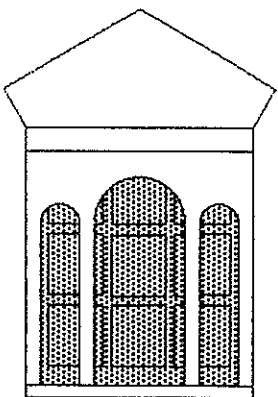
Soluzione a tempietto semplice con navatella centrale



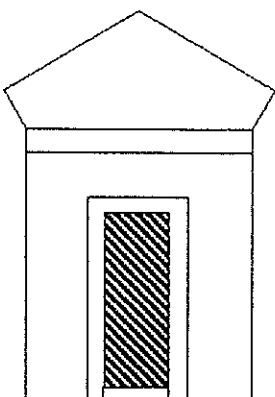
Soluzione a 'prostilo' (3 colonne) con navatella centrale



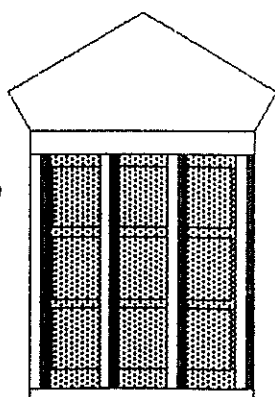
Soluzione con loggia tripartita ad archi



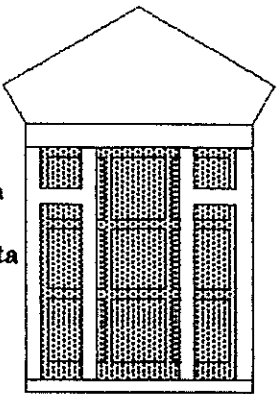
Soluzione a tempietto con portale e navatella centrale



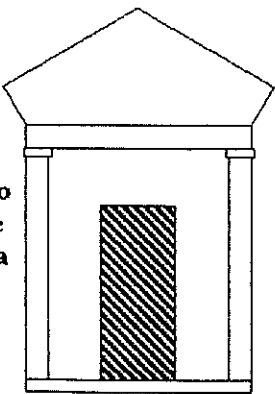
Soluzione a 'prostilo'



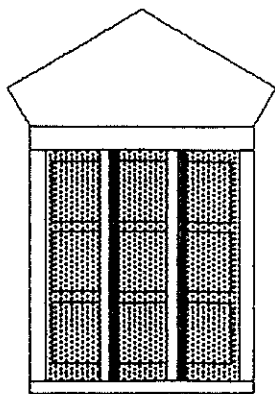
Soluzione con loggia tripartita architravata



Soluzione a tempietto con lesene e navatella centrale

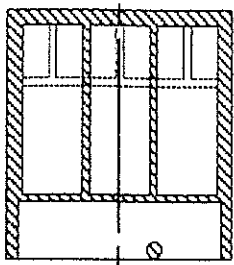


Soluzione 'in antis'

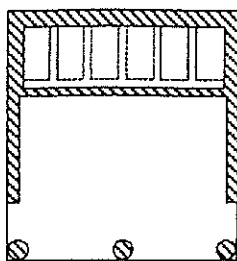


SCHEDA RIASSUNTIVA DEI TIPI - SCALA 1:100

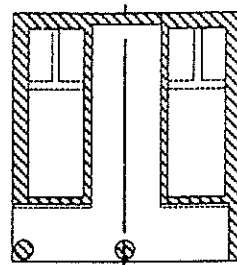
ⓑ<sub>1</sub>



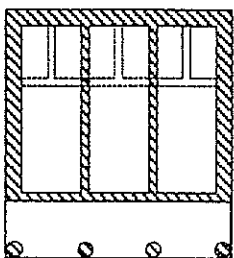
ⓑ<sub>2</sub>



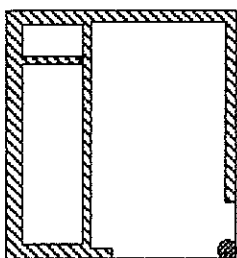
ⓑ<sub>3</sub>



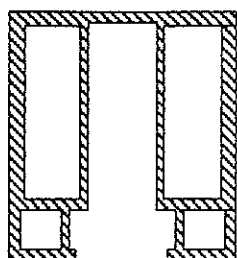
ⓑ<sub>4</sub>



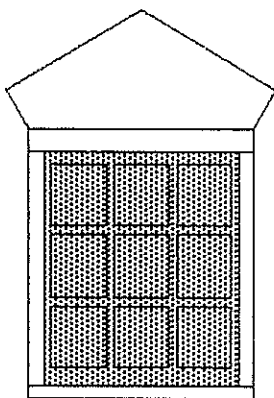
ⓑ<sub>5</sub>



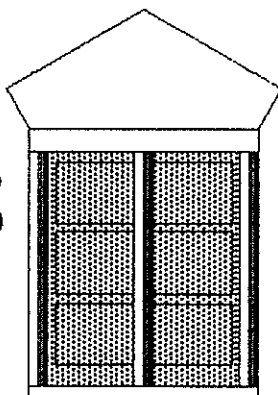
ⓑ<sub>6</sub>



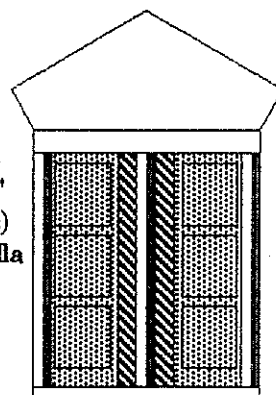
Soluzione con loggia semplice



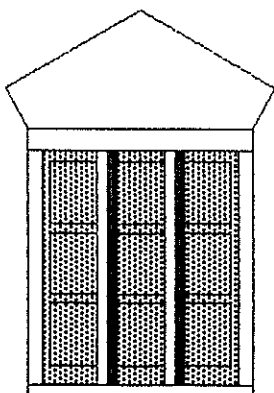
Soluzione a 'prostilo' (3 colonne)



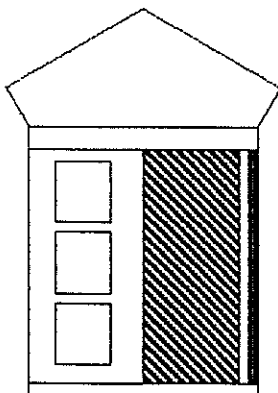
Soluzione a 'prostilo' (3 colonne) con navatella centrale



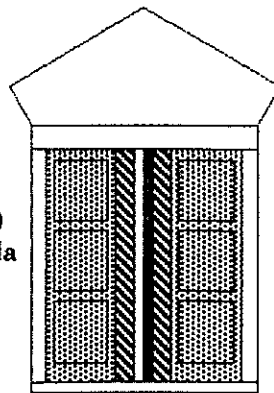
Soluzione 'in antis'



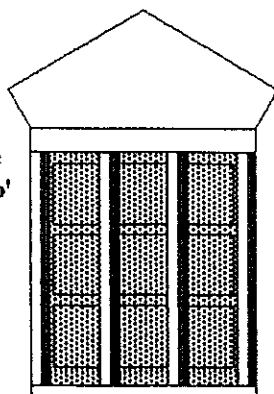
Soluzione con stele e navatella laterale (colonna d'angolo)



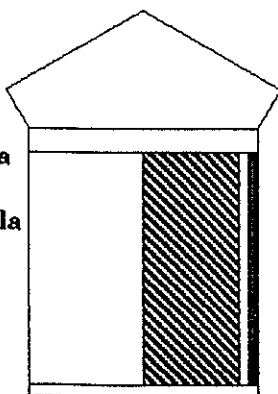
Soluzione 'in antis' (1 colonna) con navatella centrale



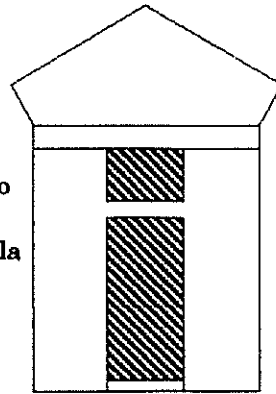
Soluzione a 'prostilo'



Soluzione a tempietto con navatella laterale (colonna d'angolo)



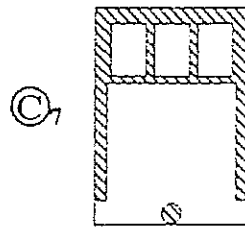
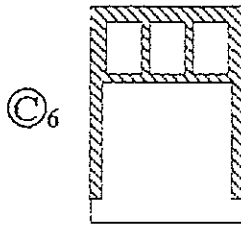
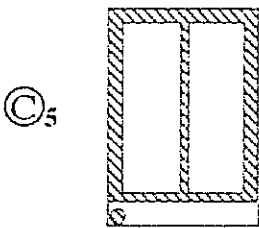
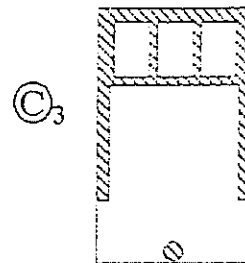
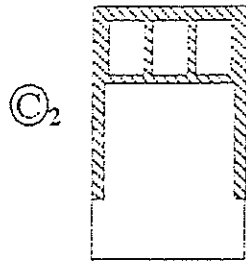
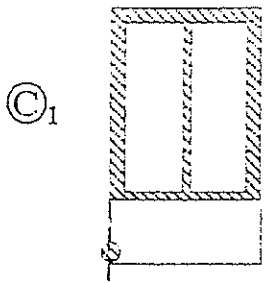
Soluzione a tempietto semplice con navatella centrale



T

ⓑ

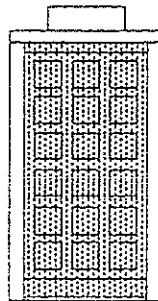
R  
e  
g  
o  
l  
a  
m  
e  
n  
t  
o  
  
A  
r  
c  
h  
i  
t  
e  
t  
t  
o  
n  
i  
c  
o  
  
C  
i  
m  
i  
t  
e  
r  
o  
  
d  
i  
  
J  
e  
s  
o  
l  
o



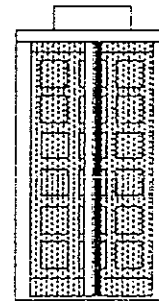
Soluzione  
con stele  
semplice



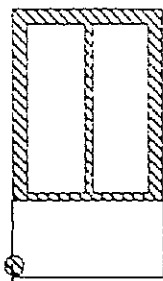
Soluzione  
con loggia  
(solo urne)



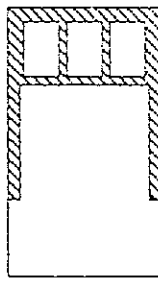
Soluzione  
'in antis'  
a colonna  
centrale  
(solo urne)



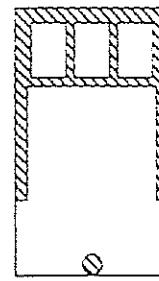
©<sub>1 bis</sub>



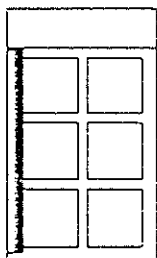
©<sub>2 bis</sub>



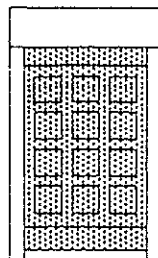
©<sub>3 bis</sub>



Soluzione  
con stele  
semplice



Soluzione  
con loggia  
(solo urne)



Soluzione  
'in antis'  
a colonna  
centrale  
(solo urne)

